

# 1. CN213754579 - MOBILE TERMINAL

National Biblio. Data

Description

Claims

Drawings

Documents

[PermaLink](#)

Machine translation ▼

**Office**

China

**Application Number**

202022975368.3

**Application Date**

07.12.2020

**Publication Number**

213754579

**Publication Date**

20.07.2021

**Publication Kind**

U

**IPC**

H04M 1/02

**Applicants**

SHENZHEN ONEPLUS TECHNOLOGY CO., LTD.

深圳市万普拉斯科技有限公司

**Inventors**

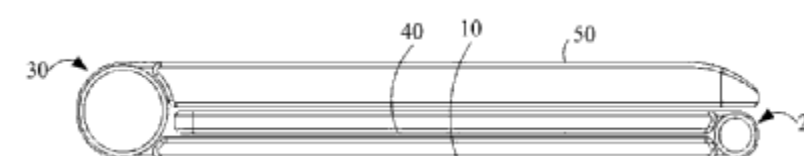
GAO YANG

高杨

**Agents**

北京超凡宏宇专利代理事务所(特殊普通合伙)

11463

**Title****[EN]** Mobile terminal**[ZH]** 移动终端**Abstract**

**[EN]** A mobile terminal relates to the technical field of display. The mobile terminal comprises a first display screen, a first turning mechanism and a second turning mechanism, the first turning mechanism and the second turning mechanism are arranged on the two opposite side edges of the first display screen respectively, the first turning mechanism is further connected with the side edge of a second display screen, and the second turning mechanism is further connected with the side edge of a third display screen. The second display screen can be rotated to be overlapped with the first display screen through the first turning mechanism, and the third display screen can be rotated to be overlapped with the first display screen through the second turning mechanism. The mobile terminal can be folded or unfolded in a double-axis mode and has various folding and unfolding use states, and use diversity and environmental adaptability are improved.

**[ZH]** 一种移动终端，涉及显示技术领域。该移动终端包括第一显示屏、分别设置在第一显示屏的相对两侧边的第一转折机构和第二转折机构，第一转折机构还与第二显示屏侧边连接，第二转折机构还与第三显示屏侧边连接，第二显示屏通过第一转折机构可转动至与第一显示屏重叠，第三显示屏通过第二转折机构可转动至与第一显示屏重叠。该移动终端能够双轴分别折叠或展开，具备多种折叠和展开的使用状态，提高了使用多样性和环境适应性。